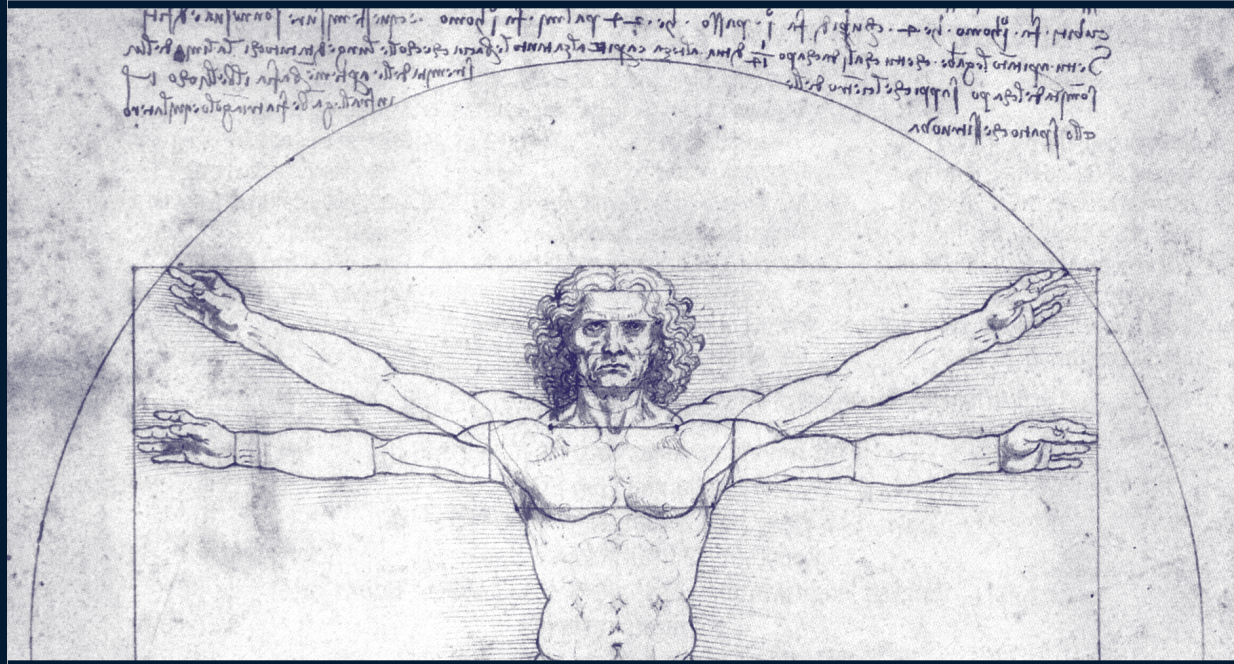


ScriptServer® PAN™ Printing System



Unify all printing with the network-wide Output Management System

ScriptServer PAN lets you and your users:

- ✦ Manage all your printing through a web browser
- ✦ Handle all printing in the network on a single server
- ✦ Create PDF files on-the-fly for high quality attachments
- ✦ Retain use of legacy application ASCII files
- ✦ Track and reroute print jobs
- ✦ Reduce printing costs
- ✦ Support legacy printing through the LPD Gateway
- ✦ View all printing activities network-wide

ScriptServer PAN saves your organization money by:

- ✦ Optimizing hardware utilization
- ✦ Replacing costly pre-printed forms and storage
- ✦ Eliminating all drivers, multiple queues, and filters
- ✦ Consolidating repetitive print menu dialog selection
- ✦ Licensing based on PAN printers, not clients
- ✦ Providing free Windows, Unix, and LPD clients
- ✦ Reducing multiple-step procedures on printing

Introducing a fresh approach to printing.

Throw away your filters, drivers and preprinted forms and centralize your printing on a powerful, unified system.

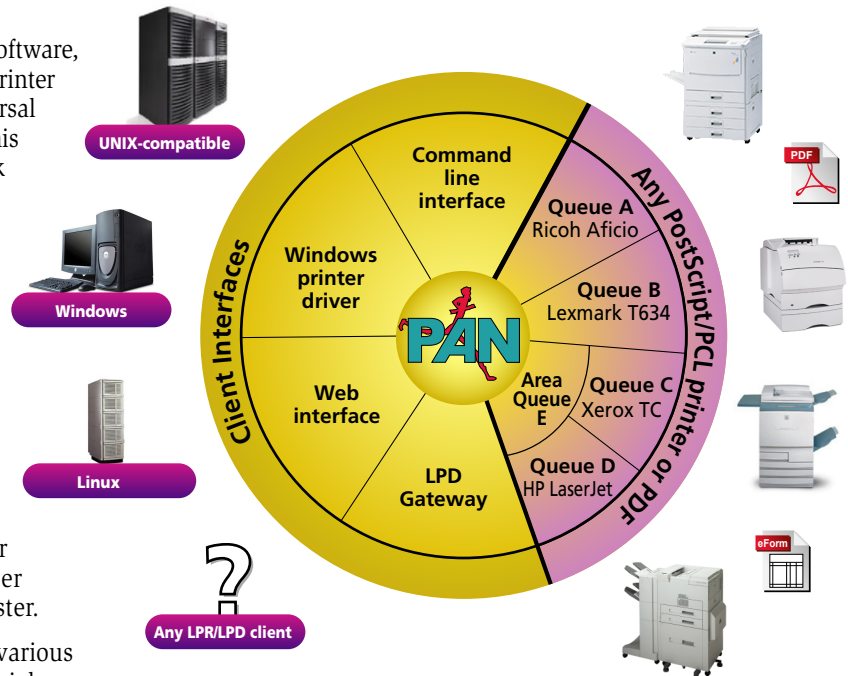
A SINGLE UNIVERSAL PRINTER DRIVER

Through the unique approach used in ScriptServer® PAN™ software, you no longer need to manage individual drivers for each printer and workstation or server. ScriptServer PAN provides a universal print driver that allows any client to submit a print job. This innovative software is a fully distributed, yet unified, network output management system. Each printer requires only one queue network wide, regardless of complex printing requirements, independent of server and client operating systems.

HOW IT WORKS

ScriptServer PAN uses the powerful device- and resolution-independent PostScript language as its underlying page description language (PDL). (It supports printers without PostScript through an integrated PostScript interpreter, which translates the PostScript to the PDL used by the printer.) In larger installations, PAN would first be installed on a master server; auxiliary servers can be set up to offload the master.

Access to ScriptServer PAN can be set up through the various client interfaces, which are available free of charge. Print jobs can be submitted using the web browser interface, the Windows client interface (see below), the “panpr” command line interface, or the LPD Gateway to access PAN printing services. PAN's LPD Gateway allows non-PAN network clients to submit print jobs using the LPR/LPD protocol, an Internet standard.



▲ Access all printer queues from anywhere, and get identical results regardless of where a document originates or where it is generated, including electronic forms in PDF files.

FORMS: THE REAL POWER OF PAN

With ScriptServer PAN, Windows system administrators don't need to worry about specific printer drivers for each new printer that rolls in the door. PAN software employs a universal printer driver that works with any PCL or PostScript printer; just give it a TCP/IP address and port, and the print queue is configured. Unix system administrators are familiar with the need to create filters on queues to achieve a particular result. PAN's unique approach ends this need to program filters by allowing administrators to create device-independent *forms*, collections of printer features, such as stapling, tray selection, duplexing, etc. which can be assigned a name that users can select with a simple click in a drop-down menu (see below).

CONSOLIDATE QUEUES FOR ALL PLATFORMS

When an administrator creates a queue on a PAN (master or auxiliary) server, the new queue is immediately available to all PAN clients on the network; no administration of individual machines is required. In addition, PAN allows the creation of *forms* to simplify the task of administering your printing capabilities.

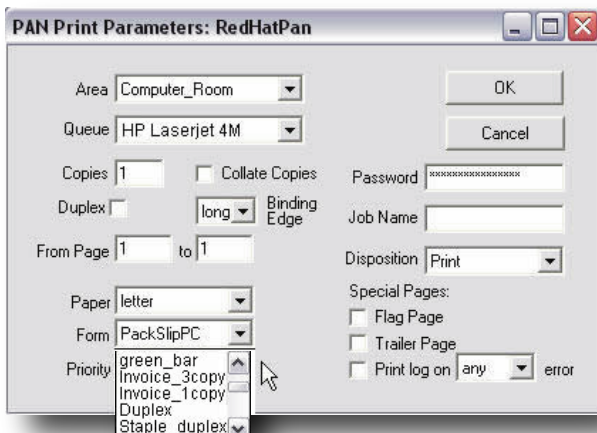
For example, many administrators create multiple queues on the same printer to manage printing features. With PAN, instead of creating a queue for duplexing and another queue for stapling on the same printer, a set of PAN forms that invoke these various capabilities can be created. Then jobs requiring various processing options can be printed on the same queue by specifying the desired form (see screen shot at left).

In this way, a single queue accomplishes what required many queues before. Furthermore, the power of forms is such that even though specific printers require different printer commands to invoke the same feature, a form will work regardless of where a job is originally sent, and where it ultimately ends up printing.

◀ The Windows interface Print dialog box allows users to select a form name that accesses a predefined group of settings (which may even include an electronic form). This feature is available in all applications with a File > Print command.

“This has to be one of the best pieces of software I have ever bought ... Great job!”

— I.T. Manager at an electronic components manufacturer



CENTRALIZED, WEB-BASED MANAGEMENT

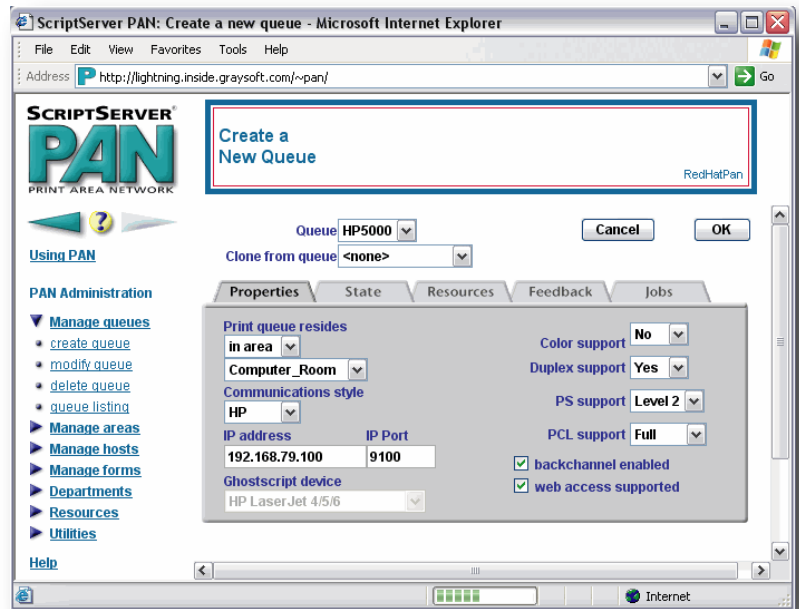
Different operating systems require different methods and levels of support for complex printing requirements, often requiring redundant effort on the part of the administrator. Even then the result will be varying degrees of success. By consolidating printing for all platforms under PAN, you will always get the desired results without sacrificing any level of functionality.

Administrators and end users can then make use of all printing resources through the web browser interface, saving the enterprise both time and money.

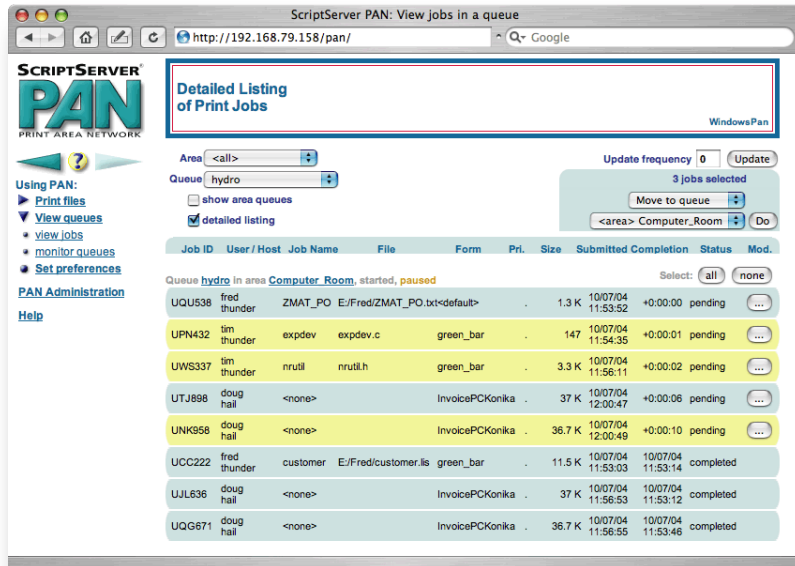
END THE CONTENTION CONFUSION

Today's enterprise computing environment leads to multiple computers and operating systems contending for the same printing resources, each using its own print queue.

By centralizing queue management within PAN, all printing activity, no matter where its origin, is visible in one place. PAN gives all platforms and users a uniform, centralized environment for control and visibility of all printing activities. Further, when making changes to the printing environment, it is immediately visible to all users of the system, regardless of platform.



▲ The Create Queue user interface simplifies a complex task



MAXIMIZE PRINTING RESOURCES

Printer queues in PAN may be organized into *print areas*, which are themselves print queues. Print jobs submitted to an area queue are candidates for printing on any queue within the area which has the required capabilities of the job. If a job requires a particular resource, such as *blue-paper*, it will be routed to a printer that can satisfy the requirement.

PAN saves your organization money by making optimal use of your printing resources.

Move print jobs to other queues with a click of the mouse. The selected jobs shown in yellow are being moved from the queue "hydro" to the area queue "Computer_Room" by simply clicking on the Do button in the browser interface. These jobs will print on the first available printer in the area.

CREATE PDFs TRANSPARENTLY

Now you can have your PDF files generated as conveniently as your printed output, including electronic forms. ScriptServer PAN now supports PDF file creation from the browser interface, the Windows client's File > Print interface, and the panpr command line interface. Since the PDF files are generated from PostScript language print documents, they are true to the original, yet compact.

Compatibility with the ScriptServer PDF Broker allows PDF file creation using Adobe Acrobat Distiller on a Window server, which offloads clients, promotes standardization, and simplifies licensing requirements.

EMPOWER YOUR SUPPORT STAFF

PAN's browser-based interface provides powerful tools to monitor and control printing. Dynamic displays provide high visibility of system activity for support staff and help desk personnel.

Other screens provide the ability to reassign jobs to queues, and to monitor individual printer performance. When a printer error occurs, such as a paper jam, it's clearly visible through queue status displays. Queue states can be changed to control both the inflow and outflow of print jobs.

**"Overall support is some of the best I've encountered
... and the product is certainly innovative."**

— Sr. Systems Administrator at a major equipment manufacturer

BEST-OF-BREED ELECTRONIC FORMS

Filling your storage space with cases of preprinted forms? Does the cost of these forms go up with each order? PAN leverages today's printer technology into savings. Electronic forms reduces printing costs of paper and toner and eliminates preprinted forms. Electronic forms also minimizes dedicated storage and lets you revise forms without purchasing expensive reprints. Electronic forms on ScriptServer PAN allows you to create accurate, high-quality, laser-crisp forms; laying text from your print jobs onto images of your business forms, efficiently combining these into business forms ready for distribution. No slow, intangible payback period; using electronic forms starts saving money now.

FLEXIBILITY MEETS YOUR SPECIAL NEEDS

Printing high-quality business forms involves more than dropping text onto a background image. It also requires the ability to select text font and sizing, micro-adjustment of text placement, and the selection of special media and finishing options. PAN allows all of these features, integrating your data and form, ready to perform time after time, without expensive preprinted forms. PAN supports subtle, yet necessary, features like multiple copies with minor differences, such as "Customer Copy" and "Accounting Copy" captions, and the ability to place fixed text like Terms & Conditions on the reverse side of a duplexed customer copy, without wasting printing resources and toner on in-house copies that don't require them. Certain copies can even be printed on different colored paper.

Logo or address change?
Make changes without
discarding old form stock.

Every field is perfectly aligned,
without stock-mounting and
page lineup hassles.

Save time and money!
Barcode for better postal rates
and improved efficiency.

Worried about compatibility?
Text is merged from your
existing flat ASCII or
PostScript-generated print files.

Fine print hard too read?
Get laser-sharp quality –
each an original.

Multi-part form copies can be
printed on different colored paper.

Signing too many forms?
Add an electronic signature.

GB1104-2
PURCHASE ORDER

6 B 1 1 0 4 - 2

ZZZ Mattress Company
A DIVISION OF SLEEPLESS SOFTWARE CORPORATION
P.O. BOX 215, ANYPLACE, WA 98990-2386
ATTN: ACCOUNTS PAYABLE

ALL DOCUMENTS MUST SHOW
OUR PART NUMBER, ITEM NO.
AND PURCHASE ORDER NO.

WASH. SALES TAX PERMIT 91-2-1772461-3
WASH. DIRECT PAYMENT PERMIT 3-01137-6220-4

TO

COMFORT STEEL CORP.
14423 Swann Street
Suite 120
Pittsburgh, PA 13289

SHIP TO

ZZZ MATTRESS CO.
2341 Insomnia Loop
Suite 800
Anyplace, WA 98990-2386

ITEM NO.	QUANTITY	CITY VARIATION ACCEPTABLE	PART NUMBER	DESCRIPTION	CHARGE CODE	TAX EXEMPT	PRICE	U/M	PKG. QTY.	REQUIRED DELIVERY
1	2,500	0	SPR-349-9	Spring coils, 9-inch, pre-washed	CA-101	N	7,281.38	U	100	11/30/04
2	50,000	10,000	BTN-151-3	Mattress buttons, fabric wrapped	CA-102	N	2,000.00	M	1M	11/30/04
3	3,750	0	STR-742-2	Strapping, 1/2-inch, linear feet	CA-103	N	928.00	M	250	11/30/04
							10,209.38			

ZZZ USE ONLY

PURCHASE ORDER NO. GB1104-2
PAGE 1 of 1
VENDOR NO. CMFTSTL
DATE 10/14/04
ORIGINATOR BUYER William B. Buyer, CSB

Point of origin
PAYMENT TERMS Net 30
VIA Best way
FRFT. TERMS Verbal of 10/13/04
CONFIRMING Bill Buyer
INVOICE APPD. BY

** TERMS AND CONDITIONS OF SALE **

Seller shall furnish the goods listed above upon the terms and conditions and pursuant to the instructions on the front and back hereof, which, together with such drawings and specifications submitted by Buyer, if any, shall, upon your acceptance of this order, constitute the full and complete contract of the parties.

THE ABOVE NAMED PURCHASER ACQUIRES OTHERWISE TAXABLE ITEMS TAX-FREE, PURSUANT TO WASHINGTON STATE CODE SECTIONS

We understand that it is a misdemeanor to give an exemption certificate to the seller for taxable items which we know, at the time of purchase, will be used in a manner other than that expressed in this certificate and, upon conviction, we may be fined up to \$500 per offense.

Original copy - do not duplicate.

CUSTOMER COPY

BY: *John Smith*

PROFESSIONAL-QUALITY FORMS – ANYWHERE

Using plain paper for your business forms, you can now print your business forms to any printer on your network. ScriptServer's device-independent design helps you achieve consistent results, even on printers from different manufacturers with different configurations. Our new ScriptServer TransForm technology allows you to completely customize the form layout without changing existing legacy applications; including the ability to print certain fields in color and to generated bar codes.

GO COMPLETELY ELECTRONIC WITH PDF FORMS

You can now use ScriptServer PAN to create PDF files from any print job. Your business forms can be transformed into PDF documents on-the-fly, and placed in a directory for archival. PDF files are ideal for high-fidelity, electronic versions of your documents that can be attached to e-mail.



GRAYMATTER
SOFTWARE CORPORATION

605 First Avenue • Suite 510
Seattle, Washington 98104-2224 USA

(206) 329-8800 - (800) 477-0348
www.graysoft.com

